



IMPRESSIVE SPATIAL SOUND

Enjoy an up to now unknown listening experience of surround sound with MYS-PHERE 3. A special design with open head and ear cushions allows the drivers to hover over the ear—enabling the sound to flow from one side to the other and vice versa. The effect: an unprecedented binaural effect and sublime spatiality.



TRANSIENT RESPONSE

Experience ultra-fast impulse reproduction facilitated by an ultra light coil and a glass foam membrane with a cobweb structure. All dispensable air volumes like tight channels, slots, holes etc. are largely avoided in order to reduce additional acoustic masses.



OPEN DESIGN

Explore rich surround sound without annoying perspiration on head and ears. On both sides of the moving membrane the spaces are completely vented, therefore no acoustic volumes hamper the membrane in its movement. This yields a pure musical enjoyment without distractions—even with extended usage times.



INNOVATIVE FRAME CONSTRUCTION

Feel—almost nothing! The super-light metal frame softly transmits the force from the soft cushions to the head to achieve very small specific surface pressure. Sensitive areas of the head are bypassed resulting in a well-fixed headband carrying the hovering drivers.



UNCONDITIONAL PREMIUM QUALITY



TECHNICAL DATA

Style	hovering next to the ears, fully open
Sensitivity	96 dB/1 mW RMS = 115 dB SPL/Veff. (at ear drum reference point)
Maximum input power	60 mW
Rated Impedance	15 Ohms (MYS-PHERE 3.1) or 110 Ohms (MYS-PHERE 3.2)
Transducer type	dynamic
Transducer size	40 x 40 mm
Diaphragm	squared, glass-foam enforced
Membrane excursion	4 mm
Frequency response	20 Hz – 40 kHz (-10 dB)
Magnetic structure	radial, fully vented
Magnet type	Neodymium N52
Magnet density	1.5 T
Weight	345 g (without cables)
Cables	custom made, silver-plated, oxygen-free copper wire, eight fine, individual strands, sheathed in thin, tear-resistant fabric.

Subject to modifications. Issued October 2020



www.MYS-PHERE.at
CONSULTATION AND SALES

**UNCOMPROMISING
IN SPATIAL SOUND, COMFORT
AND DESIGN.**



PASSIFLORA
PASSION FLOWER

MYSHERE 3

THE FIRST HOVER-EAR HEADPHONES WITH HIGH-END QUALITY

New advanced materials, improved computer simulations, revolutionary techniques like Artificial Head measurement (psychoacoustic head and trunk simulation), Laser Doppler Vibrometer measurement techniques—new technologies have improved the world of headphones in recent years.

Yet not enough for the leading developers of the legendary K 1000 by AKG, Heinz Renner and Helmut Ryback.

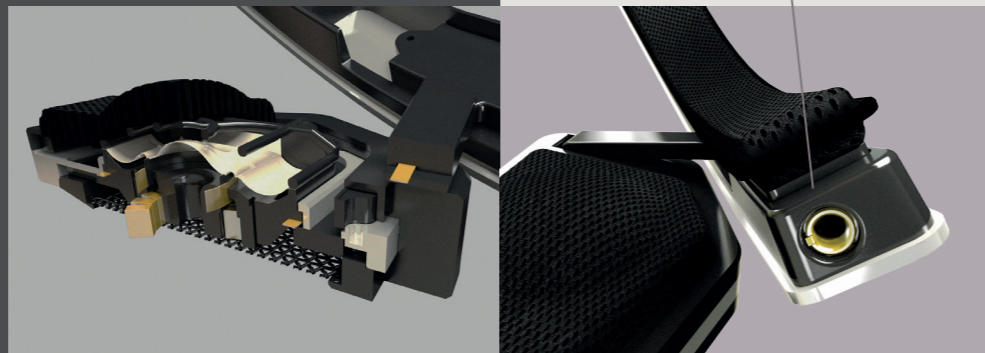
Their goal: The development of revolutionary new headphones using latest materials and methods, though adhering to the main principles of the K1000 of AKG.

Consequently, in 2017 the MYSHERE 3 was born, the first high-end, open-space headphone. And it unites all features a true audio enthusiast is expecting from headphones: Exquisite, extremely clear spatial sound, perfect fit and convincing design.

To avoid any compromises regarding production, MYSHERE 3 is assembled in our **manufacture in Vienna** solely by hand and in extremely small quantities. This ensures highest quality of the tiniest details at all times. An extensive support is reasonably complementing our service.



3



MYSHERE 3

DESIGN FOLLOWS FUNCTION

Discover a new world of hearing pleasure with MYSHERE 3 and enjoy new sound dimensions with highest wearing comfort beyond comparison. The distributor of your confidence will happily inform you on-site about all the details and offer you the possibility to experience the MYSHERE 3 in reality.

- 1 Up to three different pairs of sound frame cushions are optimized for different musical styles.
- 2 Two detachable pairs of sound frames (3.1 or 3.2) are precisely adjustable to all head shapes by magnetic attachment and therefore guarantee always perfectly fitting headphones.
- 3 The MYSHERE 3 “hovers”, thanks to its open design, over the ear—creating the “hover-ear” style. A unique (patented) headband construction guarantees highest wearing comfort and prevents sweating even after long periods of use.
- 4 An enormous frequency range up to the ultrasonic band is the best guarantor for listening experiences beyond comparison.
- 5 The patented, symmetric wiring enables comfortable connection—on either side.

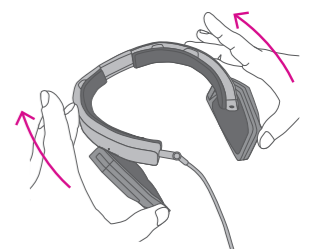
- 6 By using latest engineering materials the MYSHERE 3 is weighing only feathery 345 g.
- 7 All parts are extremely long-lasting and corrosion resistant, easy to dismantle and to clean.



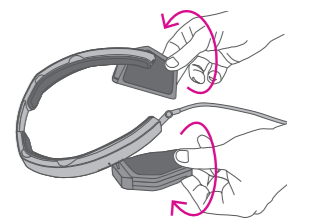
HOW TO WEAR IN 3 STEPS

1. POSITIONING THE SOUND FRAMES

Push the two sound frames along the metal bow up to the stop.



Open up the two sound frames outwards to the latch.

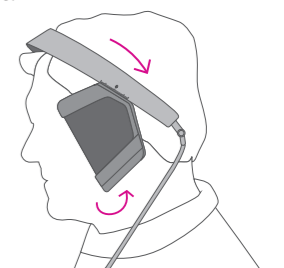


2. FITTING THE HEADPHONES CORRECTLY ON THE HEAD

Extend the headband slightly. **Slide the headphones diagonally from the upper front to the lower rear.**

Note the correct flat angle: The metal bow should rest just above the forehead!

Slide the two sound frames back downwards and angle them inward until you feel the elevation of the sound frame pads at the center of the ear.



3. ADJUSTING THE HEADPHONES

Modify position and angle of the sound frames while listening to familiar pieces of music, until you find your optimal impression of sound.—Take sufficient time for that.

more information: www.MYSHERE.at

The scope of delivery depends on your individual configuration.